

# PRODUCT OVERVIEW



RAL – COLOURS MAKE THE DIFFERENCE



TQC B.V.  
Molenbaan 19  
2908 LL Capelle a/d IJssel  
The Netherlands

+31 10 7900100  
+31 10 7900129  
@ info@tqc.eu  
www.tqc.eu

CONTENTS



The world’s leading collection of industrial colours

■ RAL 840-HR	Page 6
■ RAL 841-GL	Page 6
■ RAL K7	Page 7
■ RAL K5	Page 8
■ RAL K1	Page 9
■ RAL F5	Page 10
■ RAL K6	Page 11
■ RAL CLASSIC SINGLE SHEET	Page 11



The innovative colour palette for industrial and product design

■ RAL E1	Page 12
■ RAL E2	Page 13
■ RAL E3	Page 14
■ RAL E4	Page 15
■ RAL EFFECT SINGLE SHEET	Page 15



The CIELab-based colour system

- RAL D2 Page 16
- RAL D4 Page 16
- RAL D8 Page 17
- RAL DESIGN System A6 SINGLE SHEETS Page 17
- RAL DESIGN System A4 SINGLE SHEETS Page 17

- COLOURS OF HEALTH & CARE Page 17
- The RAL colour fan deck for designers in the health & care area



The RAL colours for computers

- RAL DIGITAL 4.01 Page 18
- Mac USB-Stick Page 18
- Win USB-Stick Page 18

- RAL APP iCOLOURS Page 19
- The app with all 2,328 colours



The RAL colour standard for plastics

- RAL P1 Page 20
- RAL P2 Page 21
- RAL P1 + P2 Page 21
- SINGLE PLATES Page 20



The trend colours of tomorrow for design and architecture

- RAL COLOUR FEELING 2012+ Page 22
- RAL COLOUR FEELING 2010/11 Page 24
- RAL COLOUR FEELING 2009/10 Page 25
- RAL COLOUR FEELING 2008/09 Page 25
- RAL COLOUR FEELING Set Page 24



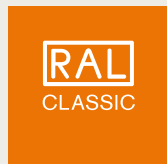
- THE COLOUR DICTIONARY Page 26
- The standard reference for interior design, advertising, design and teaching

- COLOURS OF HEALTH & CARE Page 28
- The standard reference for designers in the health & care area



- RAL COLOURS WORLDWIDE Page 30
- Distribution partners abroad





## RAL 840-HR

Primary standards with  
213 RAL CLASSIC colours

- Semi matt
- A5-sized 14.8 x 21.0 cm
- Colour illustration  
A6-sized 10.5 x 14.8 cm
- Binding colour samples  
for colour matching  
and quality control
- Including XYZ-values, colour  
distance from the original  
standard and reflectance curve
- Single cards available

## RAL 840-HR

TQC Art.no  
VF6600



## RAL 841-GL

Primary standards with  
196 RAL CLASSIC colours

- High gloss
- A5-sized 14.8 x 21.0 cm
- Colour illustration  
A6-sized 10.5 x 14.8 cm
- Binding colour samples  
for colour matching  
and quality control
- Including XYZ-values, colour  
distance from the original  
standard and reflectance curve
- Single cards available

## RAL 841-GL

TQC Art.no  
VF6603



**RAL K7**  
TQC Art.no  
VF6606



**RAL K7**  
**INDIVIDUAL**



© Warendorfer Küchen GmbH

**W**arendorf kitchens combine functional design with sophisticated living and cooking aesthetics. They are produced in all RAL colours.



© ArcelorMittal

**A** steel sculpture by world famous sculptor Anish Kapoor and star architect Cecil Balmond is London's Olympic landmark. The ArcelorMittal Orbit glows in RAL 3003 Ruby Red.



© Thonet GmbH

**T**honet produces the S 43 cantilever chair by Mart Stam in many RAL colours.



## RAL K7

Colour fan deck with  
213 RAL CLASSIC colours

- Fan deck size  
5.0 x 15.0 cm
- Colour illustration  
2.0 x 5.0 cm
- Five colours per page
- Gloss

## RAL K7 INDIVIDUAL

Personalised company imprint  
available

For further information:

**TQC**  
WWW.TQC.EU

TQC B.V.  
Molenbaan 19  
2908 LL Capelle a/d IJssel  
The Netherlands

+31 10 7900100  
+31 10 7900129  
@ info@tqc.eu  
www.tqc.eu

## RAL K5

Colour fan deck with  
213 RAL CLASSIC colours

- U-shaped protective cover
- Full-page colour illustration  
5.0 x 15.0 cm
- Well-suited for colour  
combinations and  
colour comparisons
- Semi matt or gloss

## RAL K5 INDIVIDUAL

Personalised company imprint  
available

For further information:

**TQC**  
WWW.TQC.EU

TQC B.V.  
Molenbaan 19  
2908 LL Capelle a/d IJssel  
The Netherlands

+31 10 7900100  
+31 10 7900129  
@ info@tqc.eu  
www.tqc.eu

## RAL CLASSIC

The world's leading industrial colour collection

The RAL CLASSIC colour collection has been essential for the precise communication of colours for over 80 years. So that 'RAL 1037 Sun Yellow' is the exact same colour everywhere in the world.



RAL K5  
TQC Art.no  
VF6607



RAL K5  
INDIVIDUAL

## RAL K1

Booklet with  
213 RAL CLASSIC colours\*

- Booklet size  
10.4 x 19.0 cm
- Colour illustration  
1.8 x 2.8 cm
- 16 colours per page
- Gloss

\* Without RAL 3028, RAL 6037 and  
RAL 6038

## RAL K1 INDIVIDUAL

Personalised company imprint  
available

For further information:

**TQC**  
WWW.TQC.EU

TQC B.V.  
Molenbaan 19  
2908 LL Capelle a/d IJssel  
The Netherlands

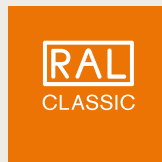
+31 10 7900100  
+31 10 7900129  
@ info@tqc.eu  
www.tqc.eu

RAL K1  
TQC Art.no  
VF6608



RAL K1  
INDIVIDUAL





## RAL F5

Information card with  
213 RAL CLASSIC colours\*

- Overall size 47.5 x 29.7 cm  
folded 21.5 x 29.7 cm
- Colour illustration  
1.2 x 2.2 cm
- All colours at a glance
- Gloss

\* Without RAL 3028, RAL 6037 and  
RAL 6038

## RAL F5 INDIVIDUAL

Personalised company imprint  
available

For further information:

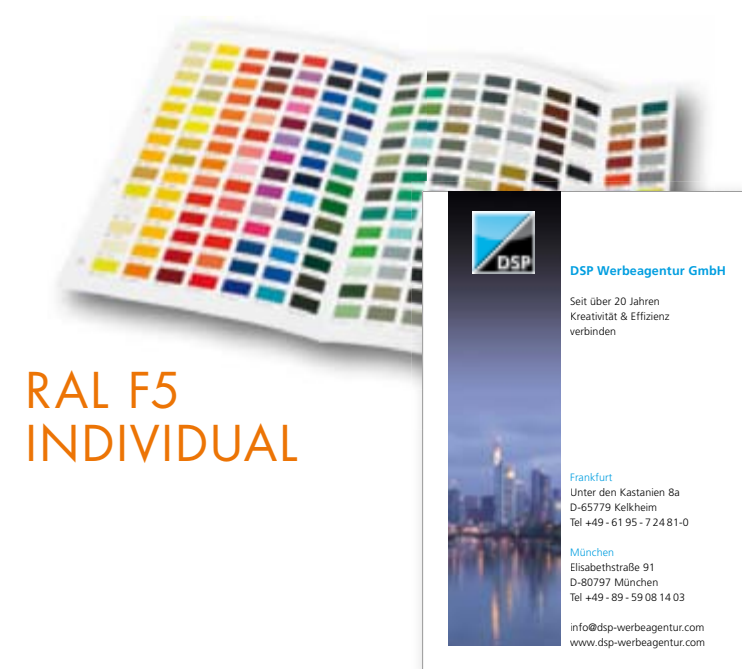
**TQC**  
WWW.TQC.EU

TQC B.V.  
Molenbaan 19  
2908 LL Capelle a/d IJssel  
The Netherlands

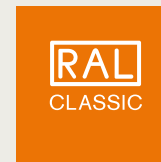
+31 10 7900100  
+31 10 7900129  
@ info@tqc.eu  
www.tqc.eu



RAL F5  
TQC Art.no  
VF6611



RAL F5  
INDIVIDUAL



## RAL K6

Ring binder with all  
213 RAL CLASSIC colours

- A4-sized 21.0 x 29.7 cm
- Semi matt
- All 213 RAL CLASSIC  
colours available as  
single sheets

RAL K6  
TQC Art.no  
VF6609







## RAL EFFECT

The innovative colour palette for industrial and product design  
As a particular highlight, the RAL EFFECT collection contains 70 metallic colours that harmonise with the remaining 420 solid colours.

### RAL E1

Primary standards of all  
490 RAL EFFECT colours in  
a protective case

- 420 solid colours and 70 metallic colours
- Based on waterborne paint system
- A6-sized 10.5 x 14.8 cm
- Colour illustration 10.5 x 13.8 cm
- Binding colour samples for colour matching and quality control
- Solid colours semi matt
- Metallic colours high gloss

TQC Art.no  
VF6612  
**RAL E1**



TQC Art.no  
VF6614  
**RAL E2**

### RAL E2 INDIVIDUAL



**F**errari World Abu Dhabi – One of the largest metal roofs in the world was coated in RAL 9006.



**M**üller Möbelfabrikanten Mobile Line – Handcrafted designer furniture made of metal, available in all RAL colours.



**M**iele – The geometry of the designer range hoods in the DA 7000 line is orientated on the ellipse. As a purpose-built variant, the top and bottom surfaces can be powder-coated in any RAL colour.



## RAL E2

Multifunctional double colour fan deck with 490 RAL EFFECT colours

- 420 solid colours and 70 metallic colours
- Solid colours are based on waterborne paint systems, metallic colours are based on acrylic paints
- Fan deck size 5.0 x 21.0 cm
- Solid colours 5.0 x 2.5 cm, metallic colours full page
- Solid and metallic colours can be viewed jointly or separately
- Solid colours semi matt
- Metallic colours high gloss

## RAL E2 INDIVIDUAL

Personalised company imprint available

For further information:

**TQC**  
WWW.TQC.EU

TQC B.V.  
Molenbaan 19  
2908 LL Capelle a/d IJssel  
The Netherlands

+31 10 7900100  
+31 10 7900129  
info@tqc.eu  
www.tqc.eu

## RAL E3

Colour fan deck with all 490 RAL EFFECT colours

- 420 solid colours and 70 metallic colours
- Each page displays the metallic colour that harmonises with the six solid colours
- Solid colours based on waterborne paint systems, metallic colours based on acrylic paint systems
- Colour fan deck format 5.0 x 21.0 cm
- Solid colours 5.0 x 2.0 cm, metallic colours 5.0 x 3.8 cm
- Solid colours semi matt
- Metallic colours high gloss

## RAL E3 INDIVIDUAL

Personalised company imprint available

For further information:

**TQC**  
WWW.TQC.EU

TQC B.V.  
Molenbaan 19  
2908 LL Capelle a/d IJssel  
The Netherlands

+31 10 7900100  
+31 10 7900129  
info@tqc.eu  
www.tqc.eu



RAL E3  
TQC Art.no  
VF6615



RAL E3  
INDIVIDUAL

## RAL E4

Colour fan deck with 70 RAL EFFECT metallic colours

- Full area colour display 5.0 x 12.8 cm
- High gloss

## RAL E4 INDIVIDUAL

Personalised company imprint available

For further information:

**TQC**  
WWW.TQC.EU

TQC B.V.  
Molenbaan 19  
2908 LL Capelle a/d IJssel  
The Netherlands

+31 10 7900100  
+31 10 7900129  
info@tqc.eu  
www.tqc.eu

## RAL EFFECT SINGLE SHEET

Colour samples of all 490 RAL EFFECT colours

- 420 solid colours and 70 metallic colours
- Solid colours semi matt, metallic colours high-gloss
- A6-sized 10.5 x 14.8 cm



RAL E4  
TQC Art.no  
VF6616



RAL E4  
INDIVIDUAL

## RAL EFFECT SINGLE SHEETS



TQC Art.no  
VF6618

TQC Art.no  
VF6617





## RAL D2

Fan deck with 1,625 RAL DESIGN colours in protective box

- Fan deck format 29.5 x 5.0 cm
- Colour display 5.0 x 2.5 cm
- Semi matt

## RAL D2 INDIVIDUAL

Personalised company imprint available

For further information:



## RAL D4

Colour atlas containing all 1,625 RAL DESIGN colours

- Atlas size 31.5 x 28.0 cm
- Colour size 1.7 x 1.7 cm
- Semi matt

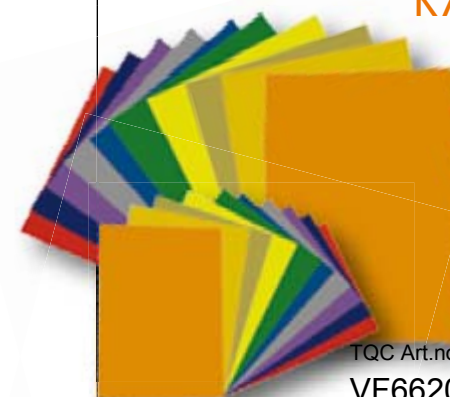
## RAL DESIGN SYSTEM

The CIELab-based colour system

For designers, architects and interior designers, the RAL DESIGN System provides 1,625 colours arranged according to hue (H), lightness (L) and chroma (C).



## RAL DESIGN SINGLE SHEETS



- | A6   | A4   |
|--|--|
| ■ A6-sized 10.5 x 14.8 cm*                       | ■ A4-sized 21.0 x 29.7 cm*                       |
| ■ Including all 26 new pastel colours            | ■ Does not include the 26 new pastel colours     |
| ■ Spectrophotometrically documented upon request | ■ Spectrophotometrically documented upon request |
| ■ Available as complete set in a box             | ■ Available as complete set in ring binders      |

\* The 89 dark shades which are no longer included in the revised RAL DESIGN System are available as A4- and A6-sized single sheets. For a list of these shades please call at: +49(0)2241-25516-30.



**B**K Keramik – Central Saint Giles is the urban highlight in London's West End. For the facade designed by Renzo Piano, 140,000 ceramic elements were processed in six different colours: RAL 070 70 80, RAL 050 50 70, RAL 050 50 78, RAL 000 75 00, RAL 110 60 50 and RAL 7035 Light Grey



**T**he striking architecture of the hotel lounge is as calming as it is stimulating. For harmonious, provocative and surprising colour effects as required, RAL has the ideal colour solution: RAL DESIGN provides 1,625 colours and one million options.



## RAL D8

Box with 8 fan decks

- Box format  
28.0 x 11.5 x 6.5 cm
- CIElab colour circle  
in inside cover
- 1,625 colours
- 230 colours per fan deck
- 1 colour each page
- Fan deck format  
10.0 x 3.3 x 5.0 cm
- Clearly arranged system
- Semi matt

## COLOURS OF HEALTH & CARE

The colour fan deck for designers  
in the health & care sector

- 120 RAL DESIGN colours  
relevant for health & care
- Four detachable colour  
chips each
- 56 pages
- Colour fan deck format  
8.7 x 21.4 cm

## RAL DESIGN SINGLE SHEETS

Colour samples of  
RAL DESIGN colours

## RAL DIGITAL 4.01

Software with all  
2,328 RAL colours

- Contains all RAL EFFECT  
colours, RAL CLASSIC colours  
and RAL DESIGN System  
colours for graphics and  
CAD programs
- Optimised RAL colour display
- RGB, CMYK, HLC information,  
Lab and HEX value
- Support for colour compo-  
sitions by means of the  
integrated colour harmony and  
colour combination programs
- Calculation of impressive  
colour harmonies based on  
CIElab
- USB stick for Windows and  
Macintosh



### RGB + CMYK

Adobe Illustrator  
Adobe Photoshop  
Adobe PageMaker  
Adobe FrameMaker  
Adobe InDesign  
B&E Ragtime  
CorelDRAW, Corel Photo-Paint etc.  
Fractal Design Painter  
Macromedia FreeHand  
Micrografx/IGrafX Designer  
Micrografx/IGrafX Picture Publisher  
QuarkXPress

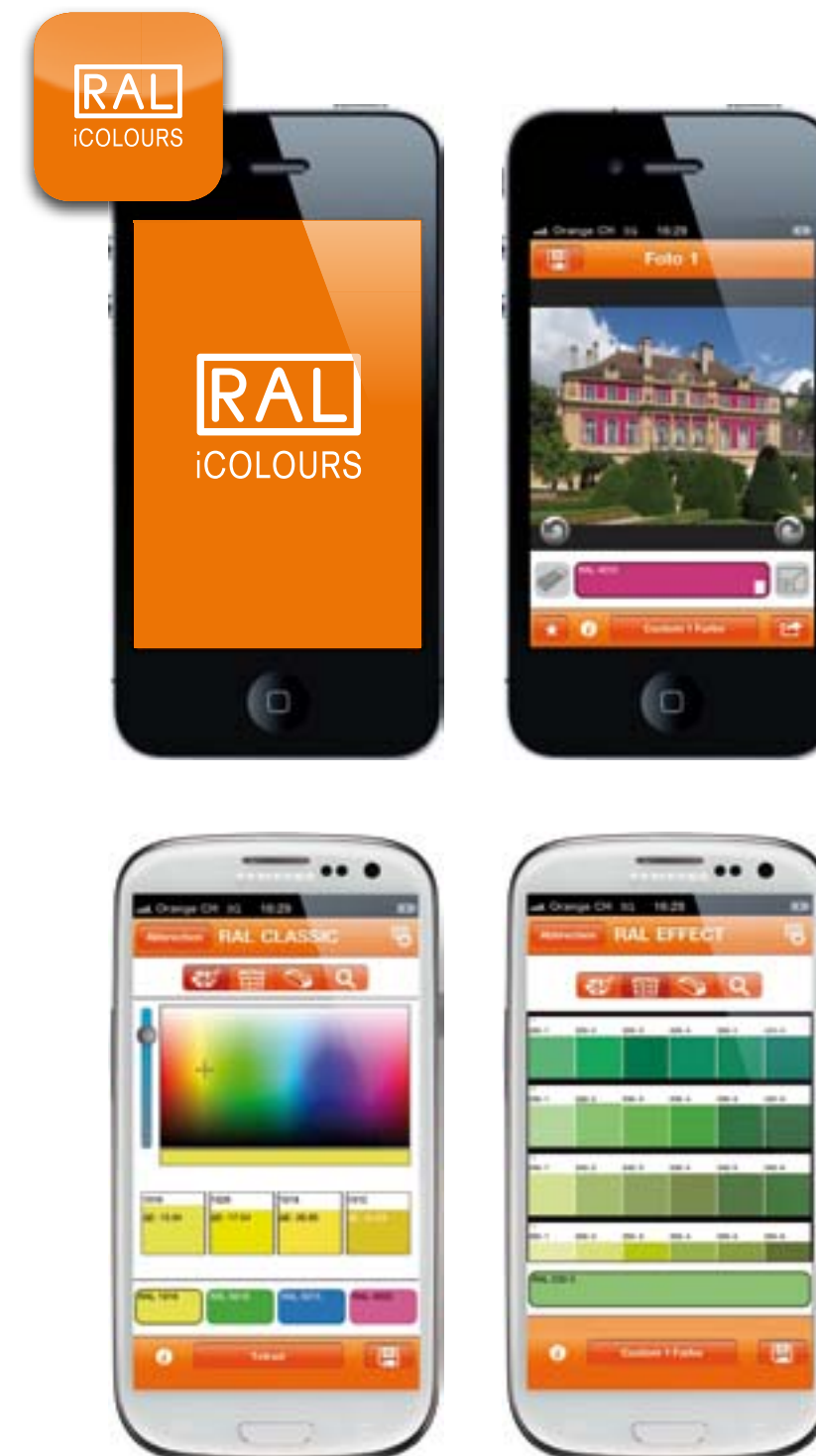
### RGB

ARC+  
ARRIBA CA3D (ehem. RIBCON)O  
ASCAD Renderlab  
Autodesk AutoCAD (3D)  
Autodesk AutoCAD, M-Color (2D)  
Bentley MicroStation (95/SE/TriForma)  
Gamma-RAY  
Graphisoft ArchiCAD  
Kinetix 3D STUDIO (VIZ/MAX)  
mb ArCon, ArCon+  
Nemetschek ALLPLAN, ALLPLOT  
SolidWorks, PhotoWorks  
Softtech SPIRIT/SPIRIT vis  
Softtech SPIRIT/FrescoMovie  
Vectorworks

## RAL APP

RAL iCOLOURS – the app with all 2,328 RAL colours

Should the building facade be Lemon, Yellow or Sun Yellow?  
Strawberry Red in the bedroom – RAL iCOLOURS will show you!  
With the RAL app for iPhone, iPodtouch, iPad and Android  
devices, you can quickly and easily colour your photos any  
RAL colour.



## RAL iCOLOURS

See everything in a new  
colour with RAL iCOLOURS  
in three simple steps:

1. Photograph an object
2. Select one of the 2,328  
RAL colours
3. Colour the object you  
photographed

- Available in the  
Apple App Store and the  
Google Play Shop



## RAL P1

100 plastic colour plates in a protective case

- Binding colour sample for plastics in RAL CLASSIC colours
- Format 10.5 x 14.8 x 0.3 cm
- The polypropylene material assures a variety of applications
- Three levels of thickness: 0.3 cm, 0.2 cm and 0.1 cm
- Master batch code designation
- Three different surface textures: polished high gloss, VDI 24 and VDI 42
- Includes absolute values and colour distance from original plastic sample
- With reflectance curve
- Protective sleeve for each plastic plate

## RAL PLASTICS

### RAL P1: THE 100 MOST POPULAR RAL CLASSIC COLOURS

The colour standard for plastics

For RAL PLASTICS polypropylen was chosen, which assures diversified applicability. RAL PLASTICS guaranties best possible translation of RAL paint colour shade into an identical shade for plastics. Thus, using RAL PLASTICS, manufacturer and plastics processors can save time, costs and raw material.

TQC Art.no  
VF6627



### RAL PLASTICS SINGLE PLATES

### RAL P2: CREATIVE COLOUR DESIGN WITH 200 RAL DESIGN COLOURS FOR INNOVATIVE PLASTICS PRODUCTS



## RAL P2

200 plastic colour plates in two protective cases

- Binding colour sample for plastics in RAL DESIGN colours
- 160 opaque plates
- 40 transparent plates
- Format 10.5 x 14.8 x 0.3 cm
- The polypropylene material assures a variety of applications
- Three levels of thickness: 0.3 cm, 0.2 cm and 0.1 cm
- Master batch code designation
- Three different surface textures: polished high gloss, VDI 24 and VDI 42
- Includes absolute values and colour distance from original plastic sample
- With reflectance curve
- Protective sleeve for each Plastic plate



### RAL P1 + P2 SET

In the P1 + P2 set, all 300 RAL PLASTICS colours in three protective cases are available at a special price

### RAL P1 + P2 SINGLE PLATES

All 300 RAL PLASTICS colours are available as single plates





## RAL COLOUR FEELING 2012+

- Four major colour trends: bare, retro modern, soft industrial and re-make
- Colour fan deck with all 32 trend colours (3.5 x 10.5 cm)
- Eight coated, detachable colour chips per colour
- Comprehensive background information
- Inspirational images
- Ideas for colour combinations

## RAL COLOUR FEELING 2012+

TQC Art.no  
VF6633

RAL COLOUR FEELING shows which trend colours will specify product design, architecture and industrial design in the future. Supported by key social, cultural and lifestyle trends, Colour Feeling 2012+ presents four colour palettes containing eight trend-setting colours each. Detachable colour chips and a colour fan deck containing all trend colours make Colour Feeling 2012+ an ideal creative tool.



© Casa Syntes, Pinto, by dasmasuno architectos



© Knot by Apollo Architects & Associates



© Photography by Victoria Ling, Styling by Franklin Till







## RAL COLOUR FEELING

The colour trend books

Colour Feeling 2012+  
Colour Feeling 2010/11  
Colour Feeling 2009/10  
Colour Feeling 2008/09

## RAL COLOUR FEELING

Set 2012+ to 2008/09\*

\*while stocks last

TQC Art.no  
VF6638

## RAL COLOUR FEELING



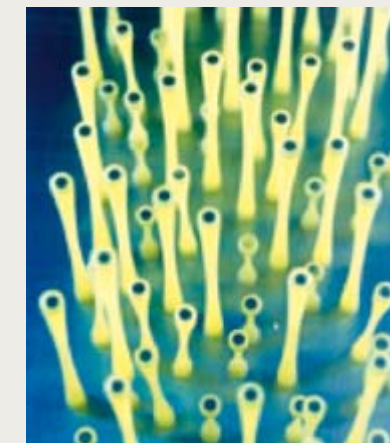
RAL COLOUR  
FEELING 2012+

RAL COLOUR  
FEELING  
2010/11



RAL COLOUR  
FEELING  
2009/10

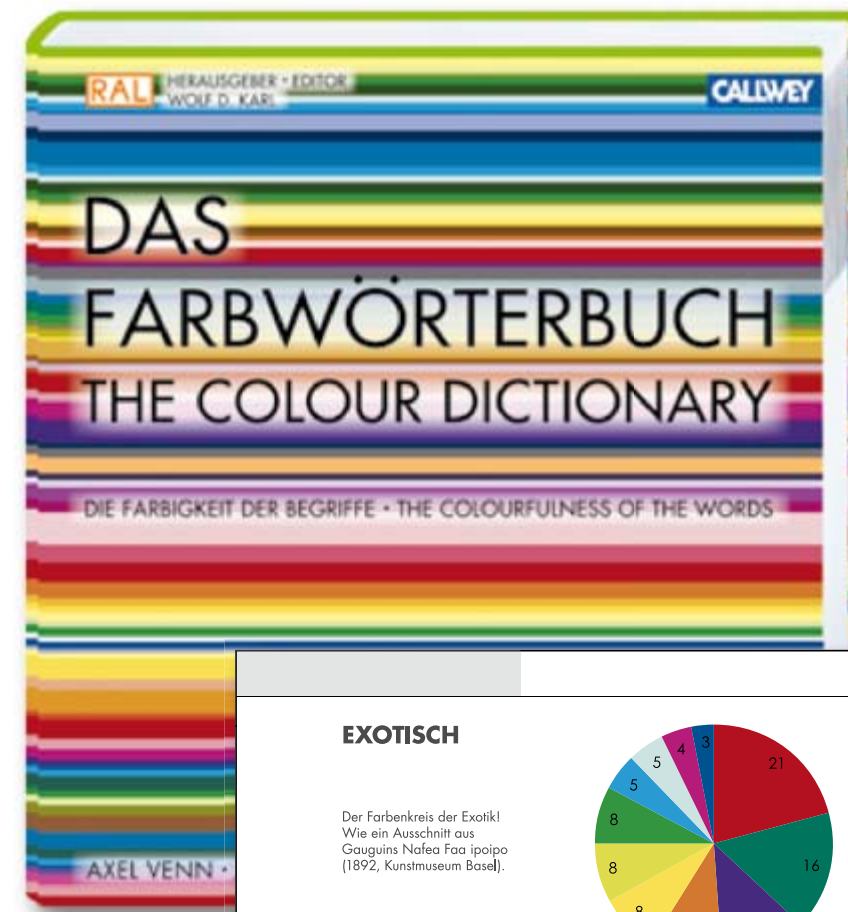
RAL COLOUR  
FEELING  
2008/09



## THE COLOUR DICTIONARY

Axel Venn is Professor of Colour Design and Trend Scouting at the University of Applied Sciences and Arts in Hildesheim, Germany.

He has been writing about colours and working with them for years and has an international reputation as a colour, trend and aesthetics consultant. Prof. Venn worked for many years to create the basis of this study, in which he uses RAL colours exclusively.



## THE COLOUR DICTIONARY

The reference work for interior design, advertising,  
design and teaching

360 adjectives and their translation into colour compositions

Envy is green, love is red... We all know the typical colour associations, but can a term really be expressed by one colour alone?

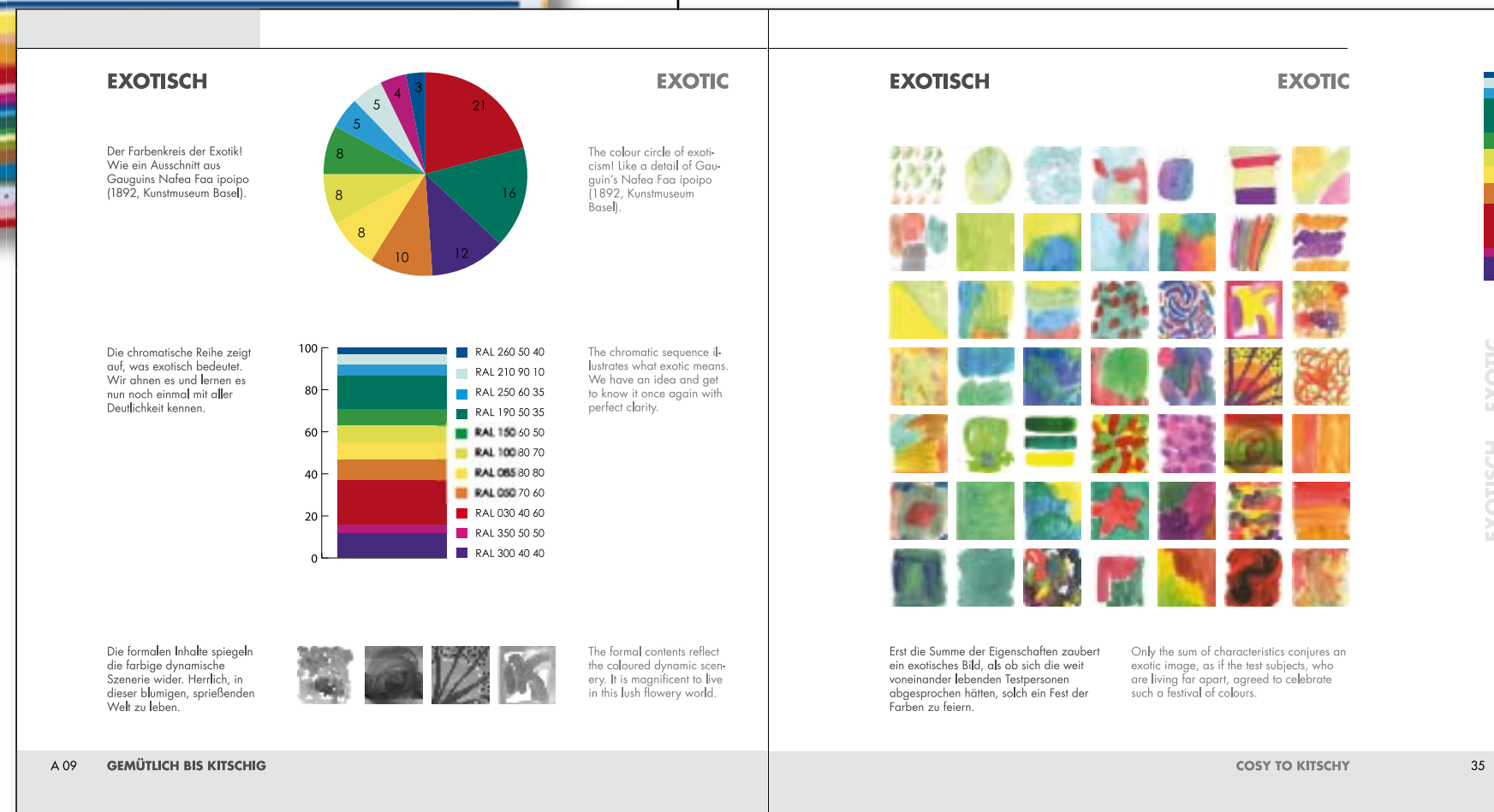
This volume adds a new dimension to the familiar rules of colour theory. Over 60 subjects produced mood boards for 360 adjectives for this purpose and then the author assigned them to their corresponding RAL DESIGN System colours.

42 expressive collages for selected concepts clarify the effects of the colours when they are used in practice.

The book that provides a unique, exciting overview of the fascinating world of colour.

## THE COLOUR DICTIONARY

- 360 adjectives expressed in colour compositions
- Displayed in RAL DESIGN System colours
- 864 pages, approx. 20,000 figures
- Bilingual: German/English
- 24 x 26 cm, hardcover
- Large poster
- Further information: [www.RAL-Colours.com](http://www.RAL-Colours.com)





## COLOURS OF HEALTH & CARE

Book with integrated colour fan deck

- 120 current terms from the health care sector
- Encoded in 340 RAL DESIGN System colours
- 384 pages, over 7,000 figures
- 24 x 26 cm, hardcover
- Bilingual: German/English
- Numerous examples of colour ways in spaces



## COLOURS OF HEALTH & CARE

The standard reference for designers in the health care area

This book is the result of an analytical, scientific study on the effects of colour. Subjects illustrated 120 thematically relevant adjectives in colour which were translated into the RAL DESIGN System. In conjunction with the practical Colours of Health & Care colour fan deck, it is an essential planning tool for designing medical practices, hospitals and nursing homes.

The playful/creative section, which is around 20 pages long, stimulates creativity and facilitates experimentation with colour ways. Almost two dozen creative grids that provide a myriad of options for trying different combinations were developed. The template coated in black and white or white only is included.

Author Axel Venn is Professor of Colour Design and Trend Scouting at the University of Applied Sciences and the Arts in Hildesheim, Germany. He lives in Berlin and has an international reputation as a trend scout and a colour and aesthetics consultant.





RAL COLOURS WORLDWIDE

For the addresses of all RAL colour sales offices worldwide, visit: [www.RAL-colours.de](http://www.RAL-colours.de) (see sales offices worldwide)



- |                  |                 |                |
|------------------|-----------------|----------------|
| ■ Argentina      | ■ Great Britain | ■ Poland       |
| ■ Australia      | ■ Greece        | ■ Portugal     |
| ■ Belgium        | ■ Hungary       | ■ Russia       |
| ■ Brazil         | ■ Iceland       | ■ Saudi Arabia |
| ■ Canada         | ■ India         | ■ Slovakia     |
| ■ China          | ■ Ireland       | ■ South Africa |
| ■ Columbia       | ■ Italy         | ■ Spain        |
| ■ Czech Republic | ■ Japan         | ■ Sweden       |
| ■ Denmark        | ■ Luxembourg    | ■ Switzerland  |
| ■ Faro Islands   | ■ Malaysia      | ■ Taiwan       |
| ■ Finland        | ■ Mexico        | ■ Turkey       |
| ■ France         | ■ Netherlands   | ■ Ukraine      |
| ■ Germany        | ■ Norway        | ■ USA          |



**TQC**  
*WWW.TQC.EU*

TQC B.V.	☎ +31 10 7900100
Molenbaan 19	📠 +31 10 7900129
2908 LL Capelle a/d IJssel	@ info@tqc.eu
The Netherlands	🌐 www.tqc.eu